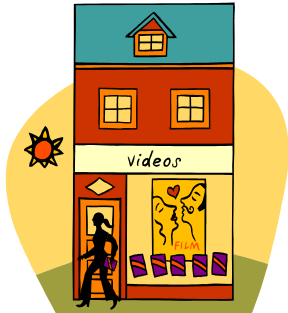


22nd Annual Corporate House Counsel Institute

Co-sponsored by KCMBA Corporate House Counsel Committee and the Association of Corporate Counsel (Mid-America Chapter)

Wednesday, June 18, 2008
 Capitol Federal Conference Center,
 Regnier Center,
 Johnson County Community College,
 12345 College Blvd,
 Overland Park, KS 66210



Red Flags, Data Protection and Identity Theft

Computer hackers are everywhere and data theft is on the rise. Companies around the world are stepping up their data protection. This informative session will explore the role of corporate counsel in protecting data and provide attendees the tools necessary to avoid identity theft and protect customer and employee data.

Karen Garrett, *Bryan Cave LLP*



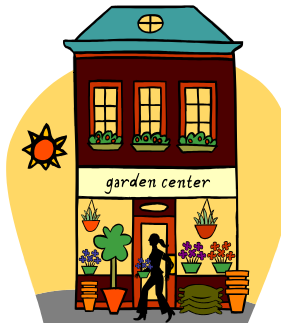
OSHA Essentials for Corporations: Living and Working Together In Harmony with OSHA

This panel, consisting of in-house counsel, outside counsel and OSHA's counsel will tackle fundamental questions regarding best practices in dealing with OSHA including advice on avoiding OSHA citations, interacting with OSHA investigators and, ultimately, OSHA lawyers from the Solicitor's Office.

Heather Humphrey, *Kansas City Power & Light Company*

Steve Reynolds, *Department of Labor*

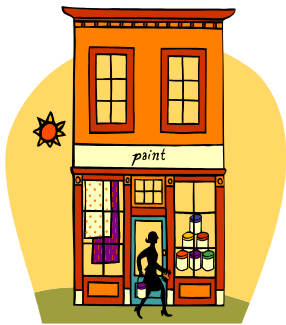
Mike Stabler, *Spencer Fane Britt & Browne LLP*



Don't Get Stuck Holding the Bag: The Importance of Pre-Contract Due Diligence

This session will address the importance of and provide essential tips for conducting pre-contract due diligence and checks for creditworthiness before entering into contracts with both business partners and customers. It will also explore best practices in collection efforts and how to best come out on top when a deal goes bad.

Charles J. Hyland, *Hyland Law Firm LLC*

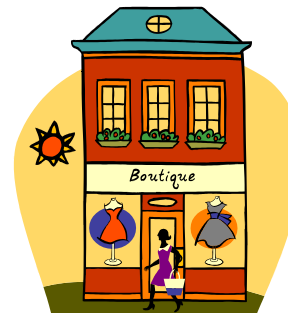


How to Prepare Your Company for an ICE Raid

ICE raids across the country have resulted in arrests of not only illegal workers, but company executives as well. This session will provide essential guidance on how your company can operate within the law and prepare for possible audits and raids by U.S. Immigration Customs & Enforcement while avoiding potential claims of discrimination.

Leon Versfeld, *Versfeld & Hugo, LLC*

Todd P. Graves, *Graves Bartle & Marcus LLC*



Everything You Need to Know About FMLA

The FMLA can create more problems for employers than any other federal employment law. The Department of Labor's regulations can be vague and the court decisions are all over the map. This session will examine the amendments to the act, the most recent court decisions and what employers can do to comply with the law and find a cure for this potential pain.

Denise Drake, *Spencer Fane Britt & Browne LLP*

Ethics and Preserving the Attorney-Client Privilege

How do you conduct an investigation or audit and ethically maintain attorney – client privilege and work product protection? Can you safely include investment bankers, accountants, and public relations professionals in investigations or legal strategy sessions? How far does the privilege umbrella extend in the business environment? This session will explore current issues concerning professional responsibility and privilege in the corporate context.

Mark Hinderks, *Stinson Morrison Hecker LLP*



Building and Maintaining a Dynamic Corporate Compliance Program

The state of corporate compliance is changing dramatically. The advent of new and more stringent government regulations and oversight is causing a shift in the responsibilities and priorities of compliance departments and the companies they serve. Experts in the field will discuss how to develop an effective compliance program, the elements of a sound compliance program, and compliance best practice.

Darryl Uffelmann, *Aquila, Inc.*

Melody Morehouse, *Embarq Corp.*

Brock Shealy, *Novelis, Inc.*

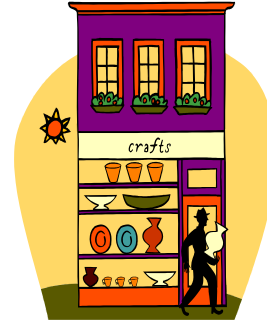


Wednesday, June 18, 2008
Capitol Federal Conference Center,
Regnier Center,
Johnson County Community College,
12345 College Blvd,
Overland Park, KS 66210

22nd Annual Corporate House Counsel Institute

Co-sponsored by KCMBA Corporate House Counsel Committee
and the Association of Corporate Counsel (Mid-America Chapter)

- 9 a.m. Registration
- 9:30 a.m. Don't Get Stuck Holding the Bag: The Importance of Pre-Contract Due Diligence
Charles J. Hyland, Hyland Law Firm LLC
- 10:20 a.m. How to Prepare Your Company for an ICE Raid
Leon Versfeld, Versfeld & Hugo, LLC
Todd P. Graves, Graves Bartle & Marcus LLC
- 11:10 a.m. Break
- 11:25 a.m. Red Flags, Data Protection and Identity Theft
Karen Garrett, Bryan Cave LLP
- 12:15 a.m. OSHA Essentials for Corporations: Living and Working Together In Harmony with OSHA
Heather Humphrey, Kansas City Power & Light Company
Steve Reynolds, Department of Labor
Mike Stabler, Spencer Fane Britt & Browne LLP
- 1:05 p.m. Lunch (provided)
- 2:15 p.m. Everything You Need to Know About FMLA
Denise Drake, Spencer Fane Britt & Browne LLP
- 3:05 p.m. Building and Maintaining a Dynamic Corporate Compliance Program
Darryl Uffelmann, Aquila, Inc.
Melody Morehouse, Embarq Corp.
Brock Shealy, Novelis, Inc.
- 3:55 p.m. Break
- 4:10 p.m. Ethics and Preserving the Attorney-Client Privilege
Mark Hinderks, Stinson Morrison Hecker LLP
- 5 p.m. Networking cocktail hour and tour of the Nerman Museum of Contemporary Art



Moderators and Planners:

Victoria Schatz, Great Plains Energy
Pascale Henn, Embarq Corp.

**7.0 CLE Hours including
1.0 Ethics Hour in Missouri
and Kansas (pending)**

Seminar Information

- **Payment** must accompany registration. KCMBA accepts cash, check or American Express, MasterCard or VISA. No admission ticket or confirmation will be sent.
- **Cancellations/No Shows:** Those who cancel at least 24 hours prior to the seminar will receive a credit voucher to use toward any KCMBA program for one year.
- **Special Needs:** If you need special accommodations, please contact KCMBA prior to the program date at (816) 474-4322.
- KCMBA members and potential members are faxed CLE notices as a service. To discontinue this service please call (816) 474-4322 ext. 313

- KCMBA Member or ACC-MA \$189
- Non-Member \$259

Register Me!

Corporate House Counsel Institute

E# 445

Name _____

Name to appear on badge _____

Firm _____

Address _____

City _____ State _____ ZIP _____

Office Phone _____ Office Fax _____

E-mail Address _____

If Paying by Credit Card: Please print clearly American Express MasterCard VISA

Card No. _____ Exp. Date _____

Cardholder's Signature _____

FEIN 43-0860985

4 Ways to Register

- Mail registration form with check or credit card information to KCMBA, 1125 Grand Blvd., Ste. 400, Kansas City, MO 64106.
- Phone registration with credit card to KCMBA at (816) 474-4322.
- Fax registration with credit card to KCMBA at (816) 474-0103.
- Visit the CLE Registration page at www.kcmba.org to register on-line.